

# Dino-Lite

## Digital Microscope



*Redefine the microscope*

[www.dinolite.us](http://www.dinolite.us)

# What is the Dino-Lite?

The Dino-Lite digital microscope is an amazing and easy to use portable handheld device for inspection, testing, and documentation. As the live image is displayed on a monitor, users are able to inspect and analyze the image using software while sitting in a comfortable upright position.

## All Models Include

2-YEAR WARRANTY • FREE TECH SUPPORT



## New Products

### Edge 3.0

Our USB 3.0 microscopes can achieve up to 45 FPS at full, uncompressed 1280x960 resolution.

#### OTHER FEATURES INCLUDE:

- Improved color accuracy
- 2560x1920 Maximum Resolution
- Removable USB 3.0 Cable
- Standard, Long, and Far working distance models available



#### MODELS

##### AM73915MZT

- Standard Working Distance
- 10x-220x Magnification

##### AM73915MZTL

- Long Working Distance
- 10x-140x Magnification

##### AM73115MTF

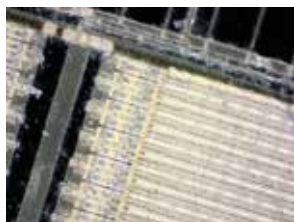
- Far Working Distance
- 10x-70x Magnification

### Integrated Wi-Fi

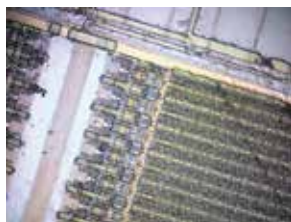
Select upcoming models will have built-in Wi-Fi. Connect to your computer, phone or tablet, no cables needed!

### Coaxial Lighting Models

Built-in coaxial lighting can reveal hidden details not visible otherwise. The N3C-A cap provides similar results for compatible models.



Normal Lighting



Coaxial Lighting

### New Eyepiece Camera

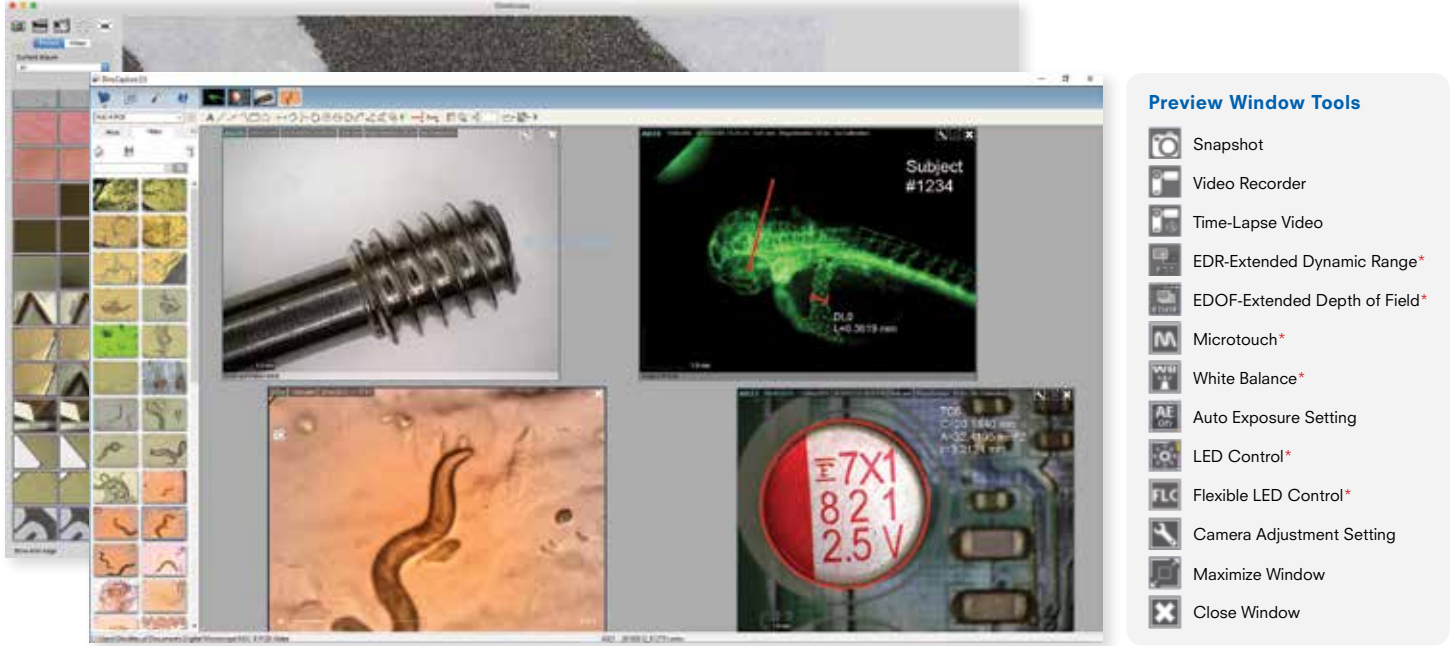
The AM7025X is our first Edge Series eyepiece camera. The AM7025X features enhanced color accuracy, 2592x1944 maximum resolution, and better clarity overall.



# Key Features

## Capture Images & Video

Easily save images, videos, and time-lapse videos using the included license-free software.



\*Feature can only be found on specific Dino-Lite models.

## Adjust Image Settings

Use the software settings panel to adjust lighting, colors, brightness, contrast, and other settings.

## Connectivity Types

There are various ways to connect different Dino-Lite models, such as USB 2.0, USB 3.0, TV (RCA), VGA, and HD/DVI connections.

## Magnification Ranges

Simple to use with powerful results, our standard magnification ranges from 10x-220x, with models up to 900x.

## High Resolution

The Dino-Lite 5MP Edge Series are specially designed for industrial applications where users can benefit from the higher resolution for detailed inspections, with a maximum resolution of 2592x1944.

## Two Housing Types

The standard ABS plastic body is very reliable and strong. The metal body consists of aerospace-grade machine tooled aluminum, which offers enhanced protection.

## Lighting Control

Sometimes light can be a damaging factor. Many Dino-Lite models have a built-in adjustable polarizer for reducing glare. Diffuser caps, lighting accessories, and exposure adjustments also help to achieve optimal results.

## Measurement & Annotation

Most models have measurement capability, including lines, circles, angles, and more. The snap feature lets you snap to any edge, allowing you to take measurements more easily. You can also add annotations for easy organization of files.

## Special Lighting - IR/UV/Fluorescence

Along with white LED lighting, we offer models with special lighting such as fluorescence, UV, and IR. A small sample are listed here.

Series	Excitation Wavelength	Emission Filter
CFVW	400nm	430nm
GFBW	480nm	510nm
GRFBY	480/575	510/610
YFGW	525nm	570nm
RFYW	575nm	610nm
DFRW	620nm	650nm



# Mobile Solutions

## WF-10 & DinoConnect App

The WF-10 WiFi adapter is designed to wirelessly stream the live image from a compatible Dino-Lite to mobile devices such as iPhones, iPads, Android phones, and Android tablets. Using the iOS DinoConnect app, you can even take measurements on the go.



## Chromebooks

Some Dino-Lite models may be used with Google Chromebooks by using the default camera application.



## DinoDirect App for Android

Connect a compatible Dino-Lite model by USB to a supported Android device and use the DinoDirect app to view a live image, and capture images and videos.

# Accessories

## RK-10A Stand & Add-ons

Our universal ergonomic tabletop stand featuring precise focus adjustments and a smooth quick release function. The included arm can be replaced or extended with various add-ons maximizing viewing angles and versatility.

- 1. **RK-10A**  
Universal Stand
- 2. **RK-10-FX**  
Flexible Extension
- 3. **RK-10-VX**  
Vertical Extension
- 4. **RK-10-PX**  
XY-Positioning Arm
- 5. **MSA2T**  
Add-on Height Extender Accessory



## More Stands



**MS09B**  
Ultra Portable



**MS35B**  
Stable Desktop Stand



**MS36B**  
Stable Desktop Stand with Horizontal Arm



**MS37B-2X**  
Dual Stand with One Horizontal Arm



**MS34B-R3**  
Compact Dual Fine Adjustment Stand



**MS33W**  
Articulating Desktop Stand



**RK-02**  
Sturdy Articulating Desk Clamp



**MS52BA2**  
Articulating Elbow Stand

## Other Accessories



**N3C-R**  
Ring Light for Edge Series



**N3C-A**  
Coaxial Light Cap for Edge Series



**BL-CDW**  
Bright Field & Dark Field Backlight Stage



**BL-ZW1**  
Polarized Backlight



# Additional Accessories



**MS23B**  
Articulating Clamp Stand



**MS35B-P4**  
Stable Desktop Stand with  
Dual Scope Mount



**MS37B-26**  
Dual Horizontal Arm Stand



**MS45BX-D2**  
Dual Specimen  
Comparison Stand



**MS09B-S**  
Stainless Steel Ultra  
Portable Stand



**MS62W1**  
Wheel Rack Stand



**MS62P**  
Rolling Rack



**MSAK826**  
Photo Light Box for  
MS35B/MS36B\*



**MSHD-M1**  
Metal Holster



**MSAK842**  
Multifunctional Stage for  
Diamonds & Gemstones



**MSAK843**  
Multifunctional Slotted Stage



**MSAK845**  
Object Holder  
Attachment for MS35B\*



**MS15X-S2**  
XY Rotation Stage for  
RK-10A/MS35B/MS36B\*



**MS33A**  
Articulating Single Lock Stand



**MS17TSW-F1**  
Foot Pedal Controller



**MSKM-01**  
Knob Motor



**MSAR5B**  
Thin Section Rotating  
Base for MSBL-ZW1\*



**MS35B-A810**  
Vertical Mount With Flex-Arm



**MSAK813**  
Advanced Supplemental  
Dual Articulating Spot Light\*



**MS36WA2**  
Horizontal Mount with  
Industrial Base

\*Additional accessories required.

# Working Distance

The Working Distance (WD) is the distance between the end of the Dino-Lite and the object being viewed. The most versatile models have as little as zero working distance at certain magnifications while others are designed for applications that require more space.

## Edge Series

Built to professional standards with high quality optical resolution, field of view enhancement, and more.

### WORKING DISTANCE AT 50X



### ADVANCED FEATURES\*:

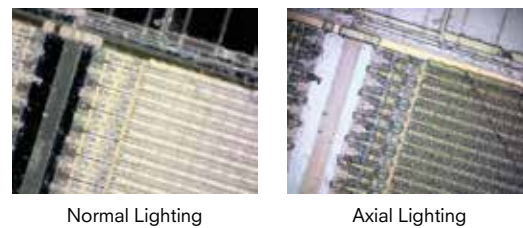
#### + INTERCHANGEABLE CAP DESIGN

Most Edge series models have a removable cap design and include a set of alternate caps. Each cap has a different lighting and focus effect for increased versatility.



#### + COAXIAL LIGHTING

Some models include a coaxial lighting mode that can reveal hidden details not visible otherwise.



#### + EXTENDED DEPTH OF FIELD (EDOF)

EDOF automatically captures and combines multiple images at different focal points to produce one clear image.



#### + AUTOMATIC MAGNIFICATION READING

AMR automatically communicates the current magnification to the DinoCapture 2.0 software for more efficient and accurate measurements.

#### + FLEXIBLE LED CONTROL (FLC)

With controllable LED quadrants, switching capability, and a 6-level adjustable luminance, FLC provides greater control of the lighting.

\*Advanced features vary by model.

## Dino-Eye Camera

Dino-Eye cameras are designed to convert your existing traditional, stereo, or compound microscope into a digital microscope. Simply insert the camera in the eyepiece, or C-mount, and connect via USB. Dino-Eye cameras are available in a number of different sizes to fit your microscope.



## Dino-Lite Direct (TV)

Designed to connect directly to a TV display, Dino-Lite connect models are available with RCA, VGA, or HD/DVI connection. Plug in your display and power on, no software needed. Great for applications that only require viewing, or when a computer is not available.



# Product List

## Dino-Lite Digital Microscope

Product	Resolution	Magnification	Interface	LEDs	Measurement & Calibration	Polarizer	Metal Housing	FLC	Working Distance	Special Features*
<b>Dino-Lite Basic</b>										
AM2111	640x480	10x-50x, 230x	USB 2.0	4-White					Standard	
<b>Dino-Lite Premier</b>										
AM3111	640x480	10x-50x, 230x	USB 2.0	8-White					Standard	
AM4111T	1280x1024	10x-50x, 230x	USB 2.0	8-White					Standard	
AM4113ZT	1280x1024	10x-50x, 230x	USB 2.0	8-White	■	■			Standard	
AM4113ZTL	1280x1024	10x-90x	USB 2.0	8-White	■	■			Long	
<b>Dino-Lite Edge (USB)</b>										
AM4115ZT	1280x1024	10x-230x	USB 2.0	8-White	■	■			Standard	
AM4115ZTW	1280x1024	2x-50x	USB 2.0	8-White	■	■			Wide Angle	
<b>AM4115ZTF</b>	<b>1280x1024</b>	<b>10x-70x</b>	<b>USB 2.0</b>	<b>8-White</b>	■	■			<b>Far</b>	
AM4515ZT4	1280x1024	400x-475x	USB 2.0	8-White	■	■			Standard	AMR
AM7115MZT	2592x1944	10x-230x	USB 2.0	8-White	■	■	■	■	Standard	
AM7115MZTL	2592x1944	10x-140x	USB 2.0	8-White	■	■	■	■	Long	
<b>AM7515MT4A</b>	<b>2592x1944</b>	<b>400x-470x</b>	<b>USB 2.0</b>	<b>8-White</b>	■	■	■	■	<b>Standard</b>	<b>COAX+AMR</b>
<b>AM7515MT8A</b>	<b>2592x1944</b>	<b>700x-900x</b>	<b>USB 2.0</b>	<b>8-White</b>	■	■	■	■	<b>Standard</b>	<b>COAX+AMR</b>
AM7915MZT	2592x1944	20x-220x	USB 2.0	8-White	■	■	■	■	Standard	AMR+EDOF*
AM7915MZTL	2592x1944	10x-140x	USB 2.0	8-White	■	■	■	■	Long	AMR+EDOF*
<b>AM73115MTF</b>	<b>2560x1920</b>	<b>10x-70x</b>	<b>USB 3.0</b>	<b>8-White</b>	■	■	■	■	<b>Far</b>	
<b>AM73915MZT</b>	<b>2560x1920</b>	<b>20x-220x</b>	<b>USB 3.0</b>	<b>8-White</b>	■	■	■	■	<b>Standard</b>	<b>AMR+EDOF*</b>
<b>AM73915MZTL</b>	<b>2560x1920</b>	<b>10x-140x</b>	<b>USB 3.0</b>	<b>8-White</b>	■	■	■	■	<b>Long</b>	<b>AMR+EDOF*</b>
<b>Dino-Lite Edge (TV)</b>										
AM5212NZT	960x480	10x-220x	TV/RCA	8-White		■			Standard	
AM5212MNZ	960x480	10x-220x	TV/RCA	8-White		■	■		Standard	
AM5212MNZL	960x480	5x-140x	TV/RCA	8-White		■	■		Long	
AM5216ZT	1280x720	10x-220x	VGA	8-White		■			Standard	
AM5216ZTL	1280x720	5x-140x	VGA	8-White		■			Long	
<b>AM5216ZTF</b>	<b>1280x720</b>	<b>1x-70x</b>	<b>VGA</b>	<b>8-White</b>		■			<b>Far</b>	
<b>AM5218MZT</b>	<b>1280x720</b>	<b>10x-220x</b>	<b>HD/DVI</b>	<b>8-White</b>		■	■		<b>Standard</b>	
<b>AM5218MZTL</b>	<b>1280x720</b>	<b>5x-140x</b>	<b>HD/DVI</b>	<b>8-White</b>		■	■		<b>Long</b>	

Items in bold were released in 2017 \*EDOF features are available only on Windows

## Dino-Eye Eyepiece Camera

Product	Resolution	Base Magnification	Interface	Measurement & Calibration	Aperture Diameter
AM4023X	1280x1024	20x	USB 2.0	■	23mm, 30mm, 30.5mm
AM4023CT	1280x1024	1x	USB 2.0	■	C-Mount
AM4023U	1280x1024	1x	USB 2.0	■	Over ocular up to 36mm
<b>AM4025X</b>	<b>1280x1024</b>	<b>20x</b>	<b>USB 2.0</b>	■	<b>23mm, 30mm, 30.5mm</b>
AM7023CT	2592x1944	1x	USB 2.0	■	C-Mount
<b>AM7025X</b>	<b>2592x1944</b>	<b>20x</b>	<b>USB 2.0</b>	■	<b>23mm, 30mm, 30.5mm</b>
AM422XN	640x480	20x	TV/RCA		23mm, 30mm, 30.5mm

## Accessories

Product	Description
RK-10A	Precision tabletop stand with quick release & fine adjustment
RK-10-FX	Flexible arm attachment for RK-10A
RK-10-VX	Vertical extension attachment for RK-10A
RK-10-PX	XY positioning arm accessory for RK-10A
RK-02	Sturdy gooseneck stand with C-clamp
MS35B	Stable tabletop stand
MS36B	Stable tabletop stand with horizontal boom arm
MS09B	Ultra portable lightweight stand

Product	Description
MS33A	Articulating single lock stand
MSA2P	Extension pole for the MS35B/MS36B
MS34B-R3	Ultra portable dual fine adjustment stand
KM-01	Motor control for magnification knob
MS15X-S2	XY and rotation stage for RK-10A/MS35B/MS36B
BL-ZW1	Polarized backlight
BL-CDW	Backlight stage with bright field & dark field illumination
WF-10	Dino-Lite Wi-Fi Adapter for iOS & Android devices

Additional products and technical specification sheets available



# Applications

## Industrial



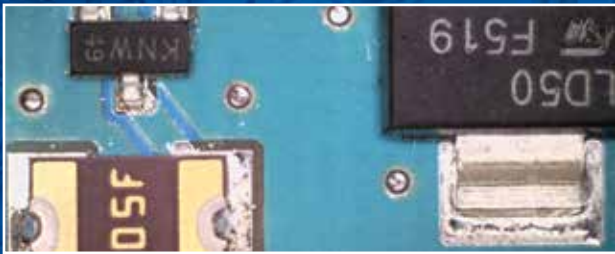
- Quality Control
- Automotive
- Textile & Composite
- Nonwovens
- Testing
- Manufacturing
- Machine Vision

## Fluorescence/UV



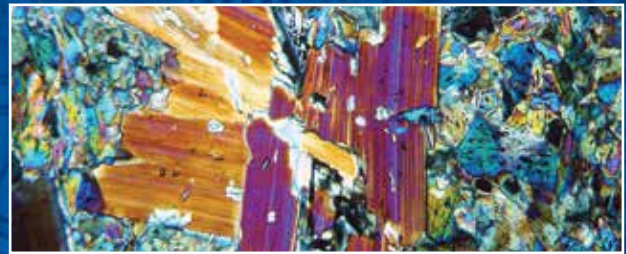
- Zebrafish
- Genetics
- GFP/RFP
- Counterfeit Detection
- Forensics
- Custom Wavelengths

## PCB & IC



- Component Inspection
- Soldering
- Quality Control
- Failure Analysis
- BGA Inspection
- Counterfeit PCB/IC
- Silicon Wafer

## Science



- Geology
- Archaeology
- Paleontology
- Plants
- Insects
- Mineralogy

## Medical



- Veterinary
- General Medical
- Dermatology
- Eye / Ear / Nose / Throat

## Education/Academics



- Teaching
- Research Lab
- Field Research

## Laboratory



- Life Science
- Genetics
- Zebrafish
- Slides

## Jewelry/Collectibles



- Jewelry
- Coin & Numismatic
- Antiques
- Hobby